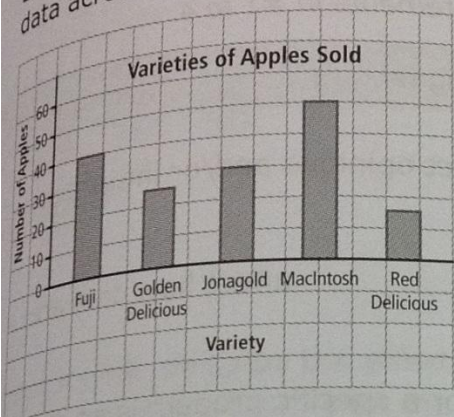


Date: _____

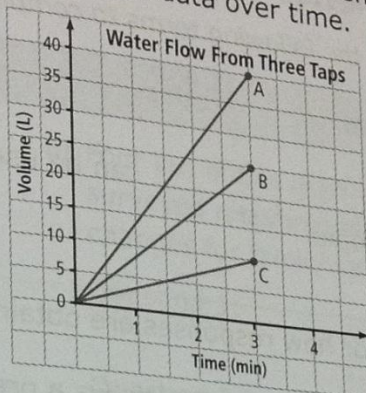
Representing Data

Data can be presented using graphs. Different graphs may display certain types of data better.

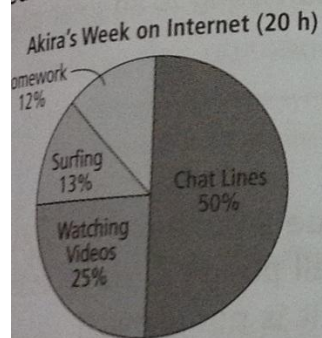
Bar graphs are best for comparing data across categories.



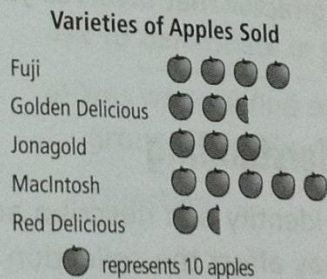
Line graphs are best for showing changes in data over time.



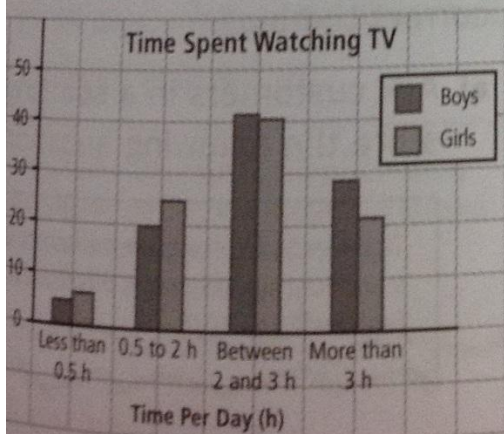
Circle graphs are best for comparing parts of a whole using percents.



Pictographs are best for comparing data that can be counted easily.



The school web site posted the results of a survey about the television viewing habits of grade students.



a) What percent of boys watch more than 3 h of TV per day?

b) What percent of girls watch 2 to 3 h of TV per day?

c) If the data in this graph are accurate, how many boys in a population of 500 boys would you expect to watch up to 2 h of TV per day?